

FileZilla Install & RWB Folder Access Instructions 9-2025

Scenario: Most requests related to FileZilla are for access to the **RWB network folder**.

1. Request Permission

- Confirm that the user has **supervisor approval** to access the Clinical\Ochin\RWB folder via FileZilla.
- The request must be documented/approved before access is granted.
- Folder path: \Corporate\Dept_shares\Clinical\Ochin\RWB

2. Grant Access

- Once approval is confirmed, grant the user access to:
- \\fs1.mnhc.local\Corporate\Dept_shares\Clinical\Ochin\RWB

3. Map the Network Drive

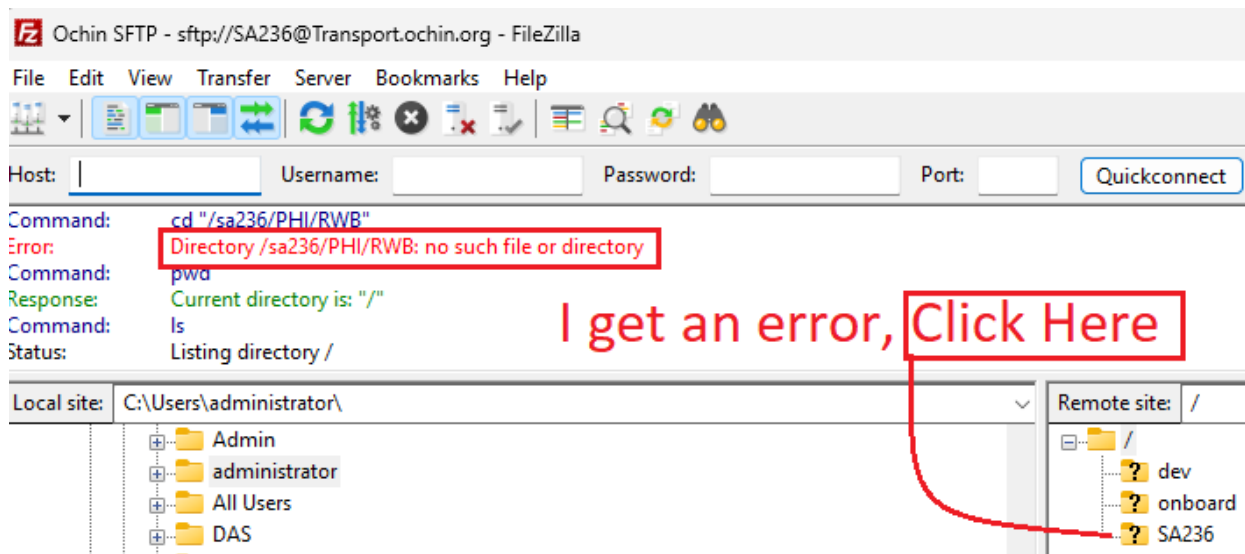
- Map the RWB folder to the **R:** drive
- \\fs1.mnhc.local\Corporate\Dept_shares\Clinical\Ochin\RWB

Download FileZilla https://filezilla-project.org/download.php?show_all=1

Import the "MNHC RWB FileZilla Import 9-2025.xml" file from IT Glue.

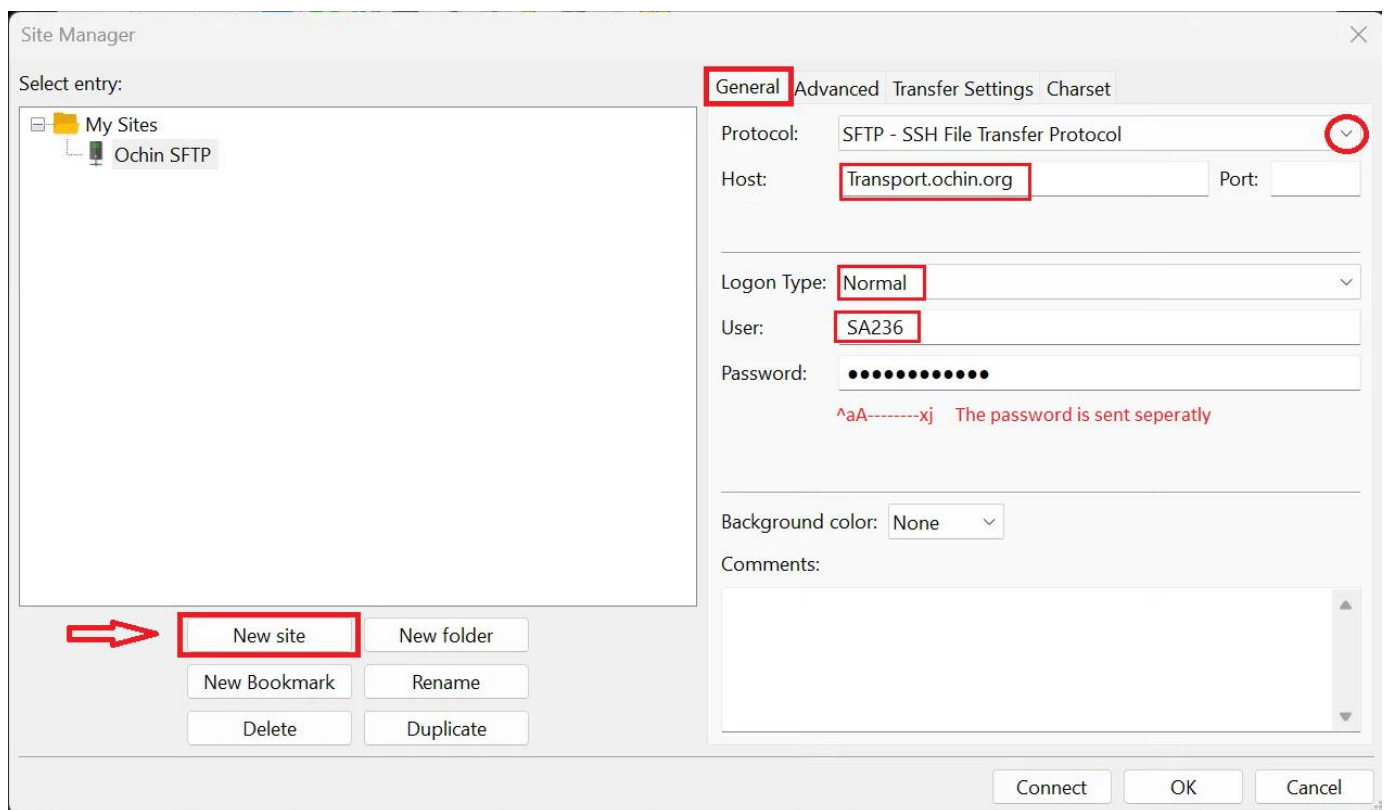
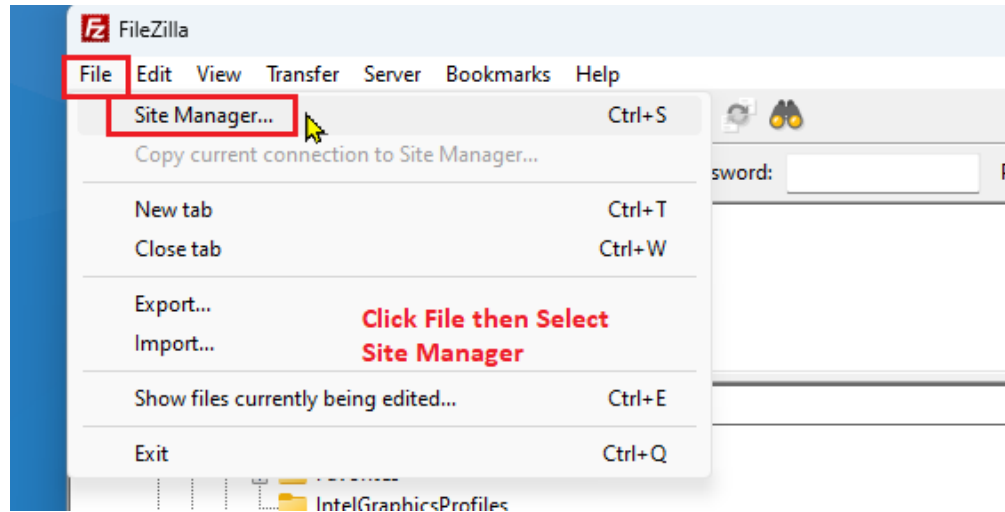
Launch from the site manager. Enter the password -

If you get an error about Directory /sa236



The error goes away, and you are finished.

How to Set Up a New Connection with FileZilla Manually

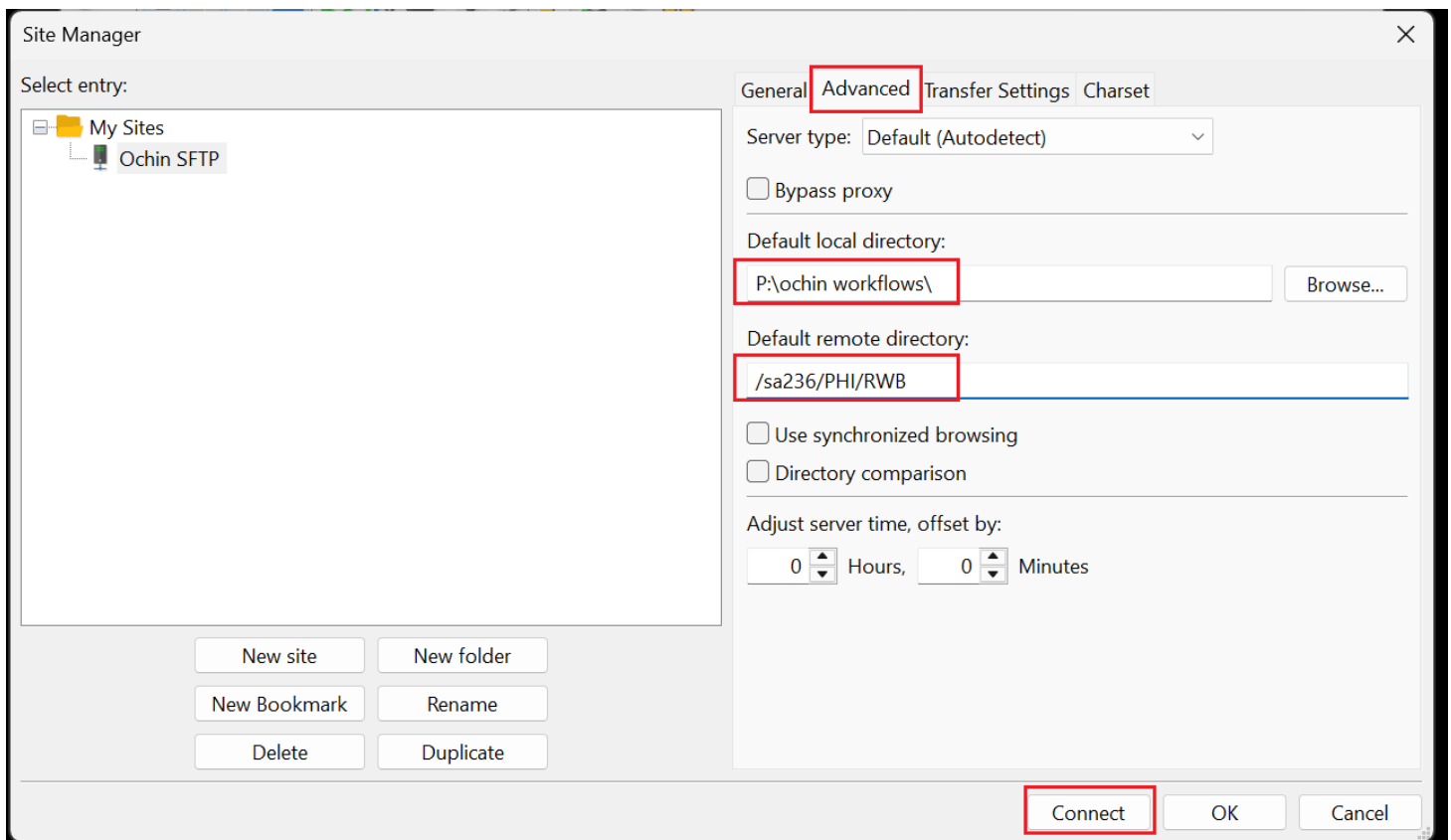


Use the pull-down menu to select the Protocol. Copy and paste from here:

Host: Transport.ochin.org

Port: Leave Blank

Username: SA236

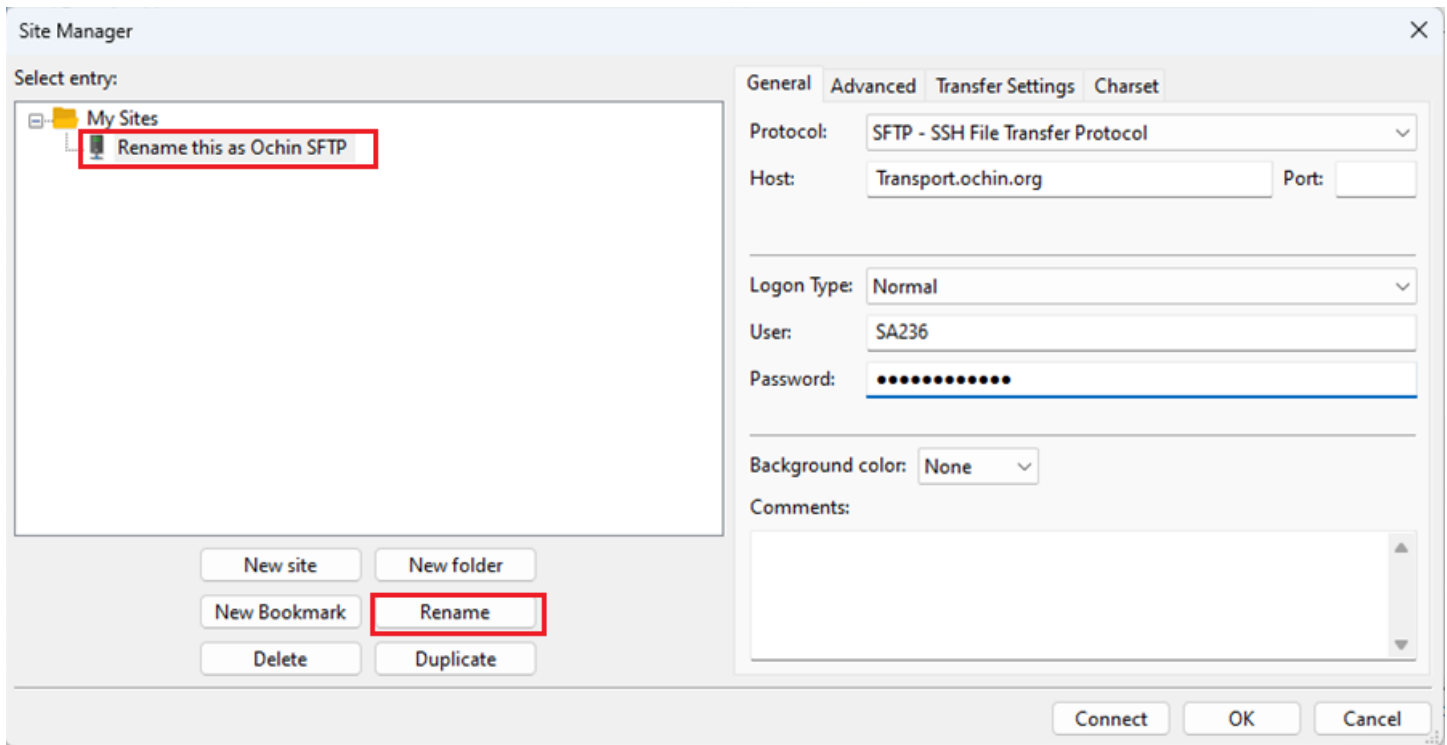


Default Path: P:\ochin workflows\

Default remote directory: /sa236/PHI/RWB

- After pressing Connect, a 30–60 second pause will occur while it connects. Please wait.
- If you receive a connection error, make sure there are no spaces after the password.
- Check that all the information has been entered exactly as listed above.
- If the connection still fails, create a DAS ticket.

Need to **Rename** Your Site Name:
Highlight the title you wish to change and select 'Rename'.



[Download FileZilla](#)

Use this link to download,

If you Google for the program to download, FileZilla, you will get unwanted ad software.

